

**to-reach**  
transferring innovation in health systems



This project has received funding from the European Union's Horizon 2020 research and innovation programme under grant agreement No 733274.

**Professor Sandra C. Buttigieg**  
**University of Malta**

## Towards a joint European research programme on health systems

Over the last decade, European health systems have faced growing common challenges: ageing related issues and continuous financial pressures call for innovative solutions on how to organise health care in an equitable and efficient manner.

To address this situation there is an urgent need to bring in innovation and research evidence, in order to identify and implement more effective and sustainable ways to organize, manage, finance, and deliver high quality care to European citizens.

### ABOUT TO-REACH

The goal of TO-REACH is to prepare a joint **European research programme** aimed at producing **research evidence supporting health care services and systems** to become more resilient, effective, equitable, accessible, sustainable and comprehensive (in Europe, and abroad).

TO-REACH is a Coordination and Support Action funded by Horizon 2020 Societal Challenge 1, which started in December 2016 and is coordinated by the **Istituto Superiore di Sanità, Italy**.

TO-REACH will pursue **three main objectives**:

- to produce a **Strategic Research Agenda** which will identify common priority areas across Europe for a future joint research programme on health services and systems;
- to broaden the **coalition** of committed Member States and funding bodies;
- to develop a **structured system of information exchange** between public health research funders and other relevant bodies.

**to-reach**  
*agenda for health services  
and systems research*

identifying new solutions able to respond to rising challenges

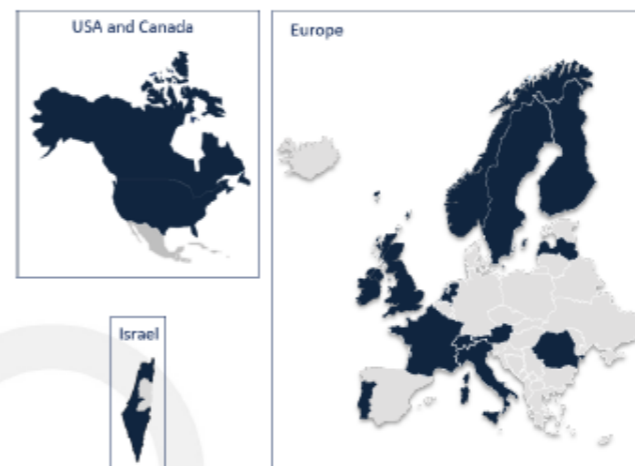
understanding and predicting whether such solutions can be **implemented and transferred** effectively in other settings.

## OUR CONSORTIUM

The TO-REACH Consortium brings together **28 partners, from 15 EU Member States and 5 non-EU countries.**

Partners can be clustered around three main types:

- 19 Governmental and Funding Bodies;
- 6 National Research Organisations;
- 3 European level Bodies



### Governmental and Funding Bodies

- the Istituto Superiore di Sanità (the Italian National Institute of Health), coordinator;
- Ministero della Salute, Italy;
- Agenas, national Agency for regional health services, Italy;
- ZonMw (Netherlands Organisation for Health Research & Development), the Netherlands;
- Austrian Public Health Institute (GÖG), Austria
- Academy of Finland, Finland;
- IReSP/ITMO santé publique, France;
- Health Research Board, Ireland;
- Latvian Council of Science, Latvia;
- Research Council of Norway, Norway;
- Foundation for Science and Technology (FCT) Portugal;
- National Institute of Public Health, Slovenia;
- Forte, Swedish Research Council for Health, Working Life and Welfare, Sweden;
- Federal Office of Public Health (FOPH), Switzerland;
- Health and Care Research Wales, UK;
- Regional Agency for Public Health and Social Well-being (PHA) HSCNI, Northern Ireland UK;
- CIHR Institute of HSPR, Canada;
- Israeli Ministry of Health, Israel;
- Agency for Healthcare Research and Quality (AHRQ), United States.

### National Research Organisations

- NIVEL, Netherlands institute for health services research, the Netherlands;
- National Institute for Health and Welfare (THL), Finland;
- University of Riga (RSU), Latvia;
- University of Malta (UoM), Malta;
- Babeş-Bolyai University (UBBCU), Romania;
- Catholic University of Sacred Heart (UCSC), Italy.
- European Observatory on Health Systems and Policies;
- European Health Management Association (EHMA);
- European Public Health Association (EUPHA).

## GET INVOLVED

Governmental and funding bodies are cordially invited to become involved in the CSA of TO-REACH, among others through the opportunity to join its External Policy Advisory Council. This can help in staying informed and providing inputs for the Strategic Research Agenda.

This consultation is being organised as part of the To-Reach project, a project funded by the Horizon 2020 programme of the European Union. As a result of this project, a strategic agenda for health systems research with added value for implementation at European level will be elaborated.

This consultation aims to provide answers to the following questions:

- Which are the most important priorities for health systems research within our country? Why? Which challenges will they help to address?
- What are the research priorities/projects for which we see added value in organising health systems research at European level? Why?

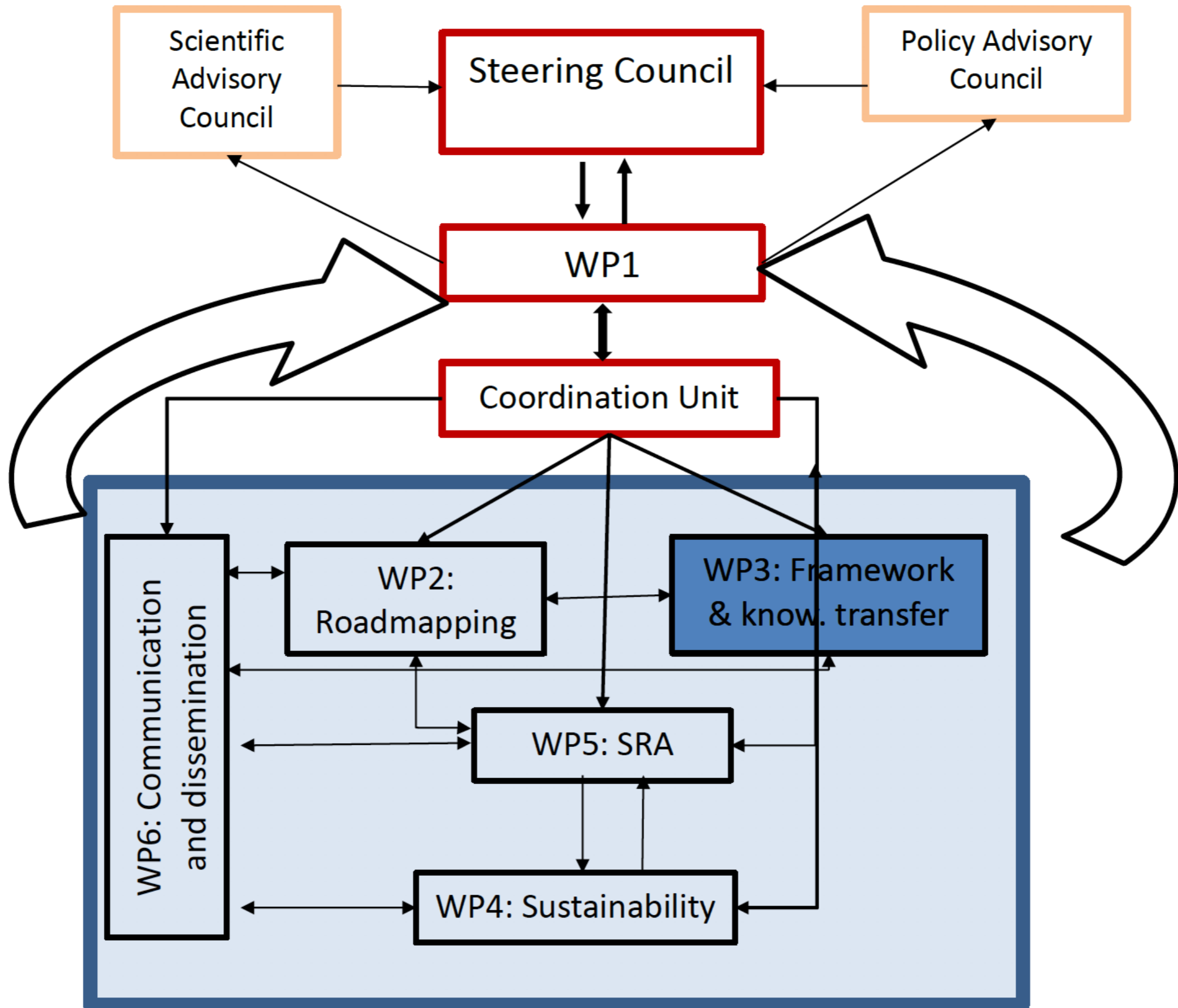
## **Task 2.3: Identifying current and upcoming priorities in the organisation of care of policy makers, funding bodies and other stakeholders (M7-M14)**



**L-Università  
ta' Malta**

- Task leader: UoM (Malta), coleader: OBS
- Main contributors: NIVEL, NIJZ, IReSP/ITMO

*Pert diagram of the TO-REACH project*



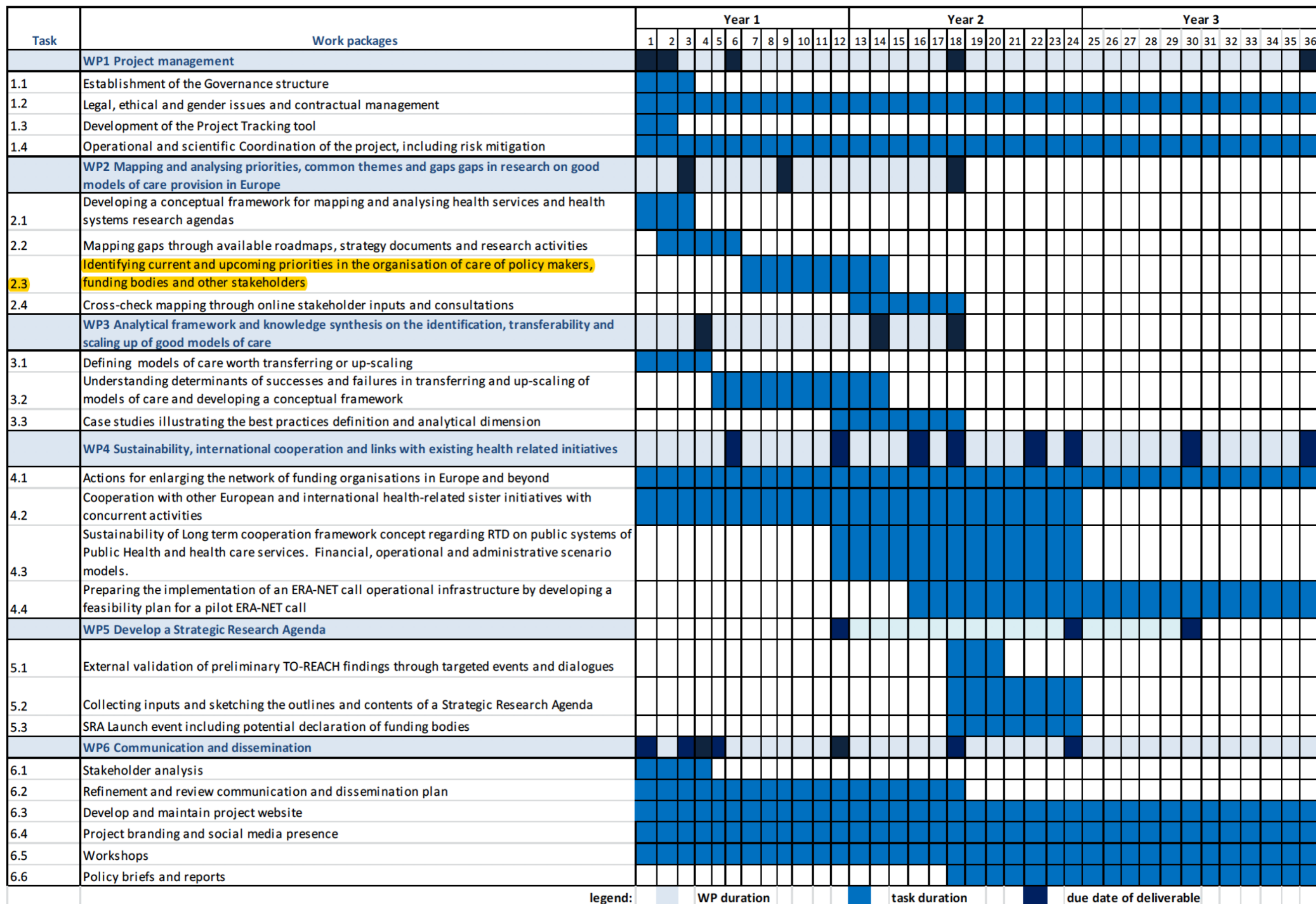
## **Task 2.3: Identifying current and upcoming priorities in the organisation of care of policy makers, funding bodies and other stakeholders (M7-M14)**

- Task 2.3 will add a scanning perspective of future challenges and policy reforms, which are then presented as inputs for consultations among ministerial and funding bodies as well as other experts and stakeholders (including members of the public) in all partner countries:

Are these the challenges to be expected and if so, what are the research questions needed to answer these?



# Gantt chart of the TO-REACH project



legend: [light blue] WP duration [dark blue] task duration [black] due date of deliverable

## **Task 2.3: Identifying current and upcoming priorities in the organisation of care of policy makers, funding bodies and other stakeholders (M7-M14)**

- Meetings will be organised by one national level partner in each country, utilising their knowledge of the local environment to identify and involve appropriate experts and stakeholders, both from the health sector and other relevant sectors,  
  
e.g. sustainability domains such as finance, employment, welfare and social affairs, given the impacts these can have on the health of citizens and the care provided for them.

## **Task 2.3: Identifying current and upcoming priorities in the organisation of care of policy makers, funding bodies and other stakeholders (M7-M14)**

- Each national partner will also seek the views of representatives of patients and the general public.
- Fully integrated public and patient expertise and perspective is vital to inform and influence the design, conduct and quality of the proposal.

## **Task 2.3: Identifying current and upcoming priorities in the organisation of care of policy makers, funding bodies and other stakeholders (M7-M14)**

- Results of national consultations will be summarised by national partners in their own language, to be used for internal / national priority setting, and in English, using a standard template developed by the Task leader, in order to identify overarching themes across countries and to inform Europe-wide planning.

## **Task 2.3: Identifying current and upcoming priorities in the organisation of care of policy makers, funding bodies and other stakeholders (M7-M14)**

- An analysis will be undertaken to determine similarities, overlaps and differences between countries according to various dimensions;
- We will provide intelligence that can help coordinate research efforts, e.g. between countries with existing research collaborations and between countries which are most comparable,
- e.g. in terms of their track records of health care reforms, their population size or their type of health care system.

This consultation aims to provide answers to the following questions:

- Which are the most important priorities for health systems research within our country? Why? Which challenges will they help to address?
- What are the research priorities/projects for which we see added value in organising health systems research at European level? Why?